



BUS RAPID TRANSIT FEASIBILITY STUDY

Community Advisory Committee:

Treme/7th Ward/Gentilly

Monday, April 4, 2022

5:30 – 7:00 pm



Welcome and Introductions

Recap:

- Where RTA is Going
- Investing in Existing Service
- Why Bus Rapid Transit (BRT)?
- BRT Goals

BRT Corridor Development

- Route & Transit Priority Options
- Public Engagement Approach



RTA

- **Lona Hankins, Deputy CEO for Planning & Infrastructure**
- **Dwight Norton, Sr. Director of Strategic & Long-Term Planning**

Project Consultant Team Representatives

- **Iam Tucker – ILSI – Prime Consultant**
- **Geneva Coleman & Karimah Stewart – Hawthorne Agency – Public Engagement**
- **Devin Foil – HNTB – Planning Consultant**

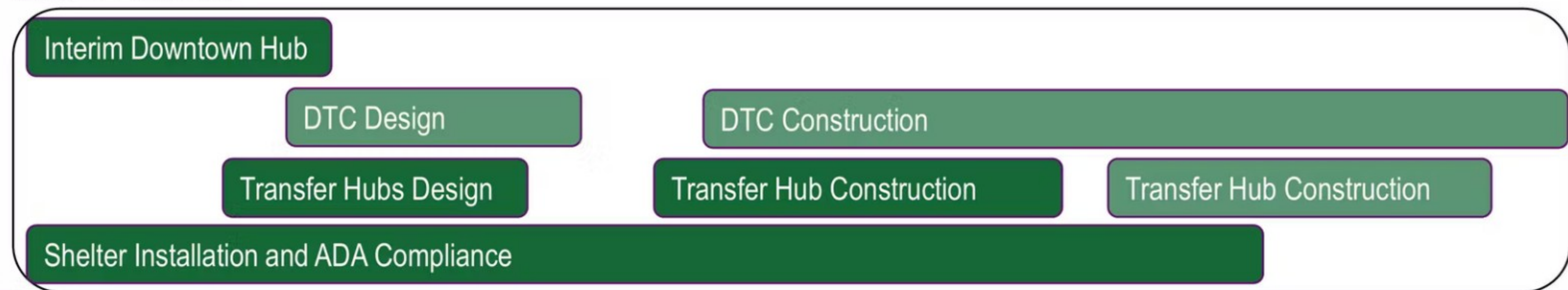
WHERE WE'RE GOING



Bus Rapid Transit (BRT):



Modern Facilities:



BRT GOALS



Connect to opportunities through fast and efficient service.



Provide equitable transportation choice to meet communities needs.



Promote investment in neighborhoods.



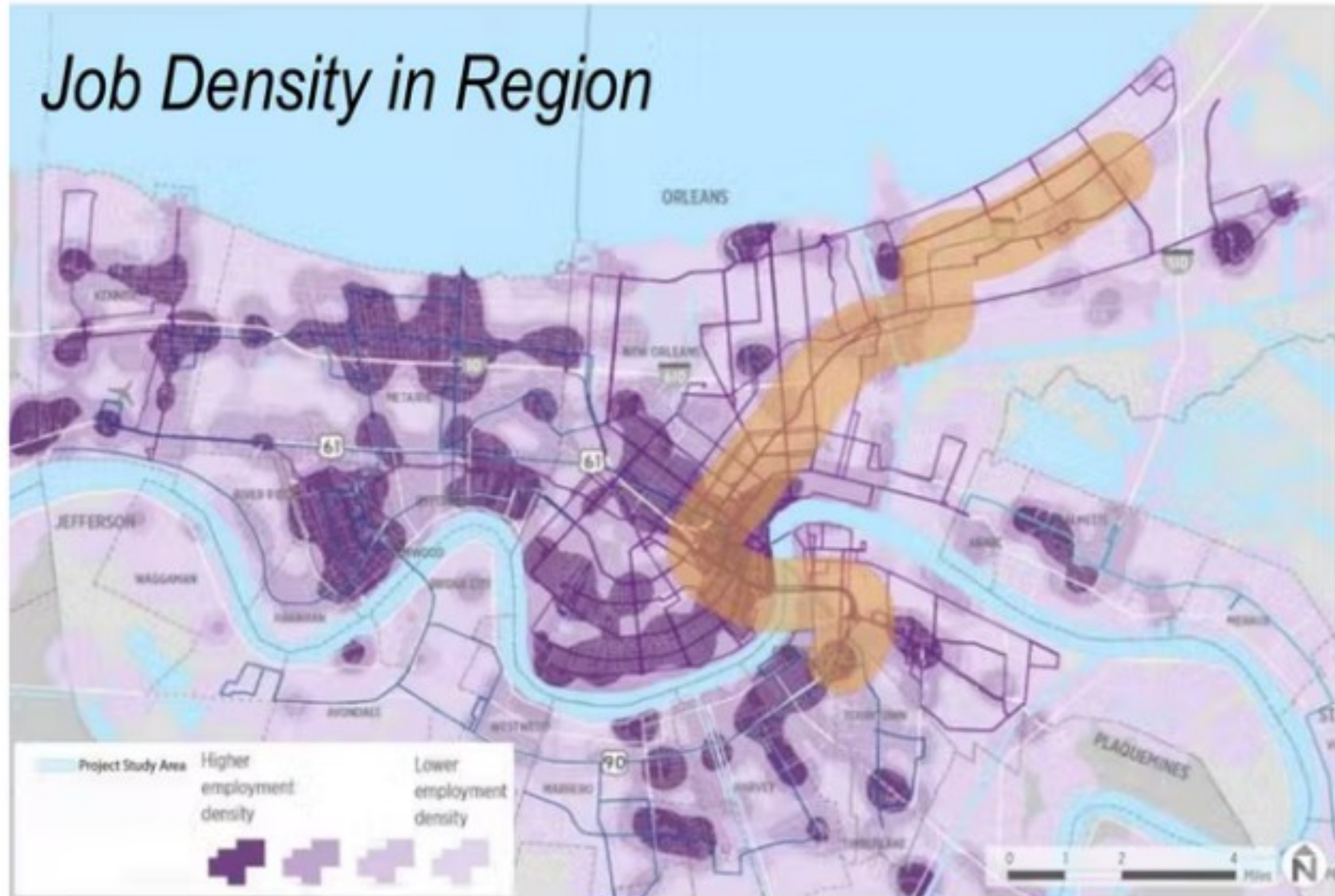
Support a sustainable and healthy community.



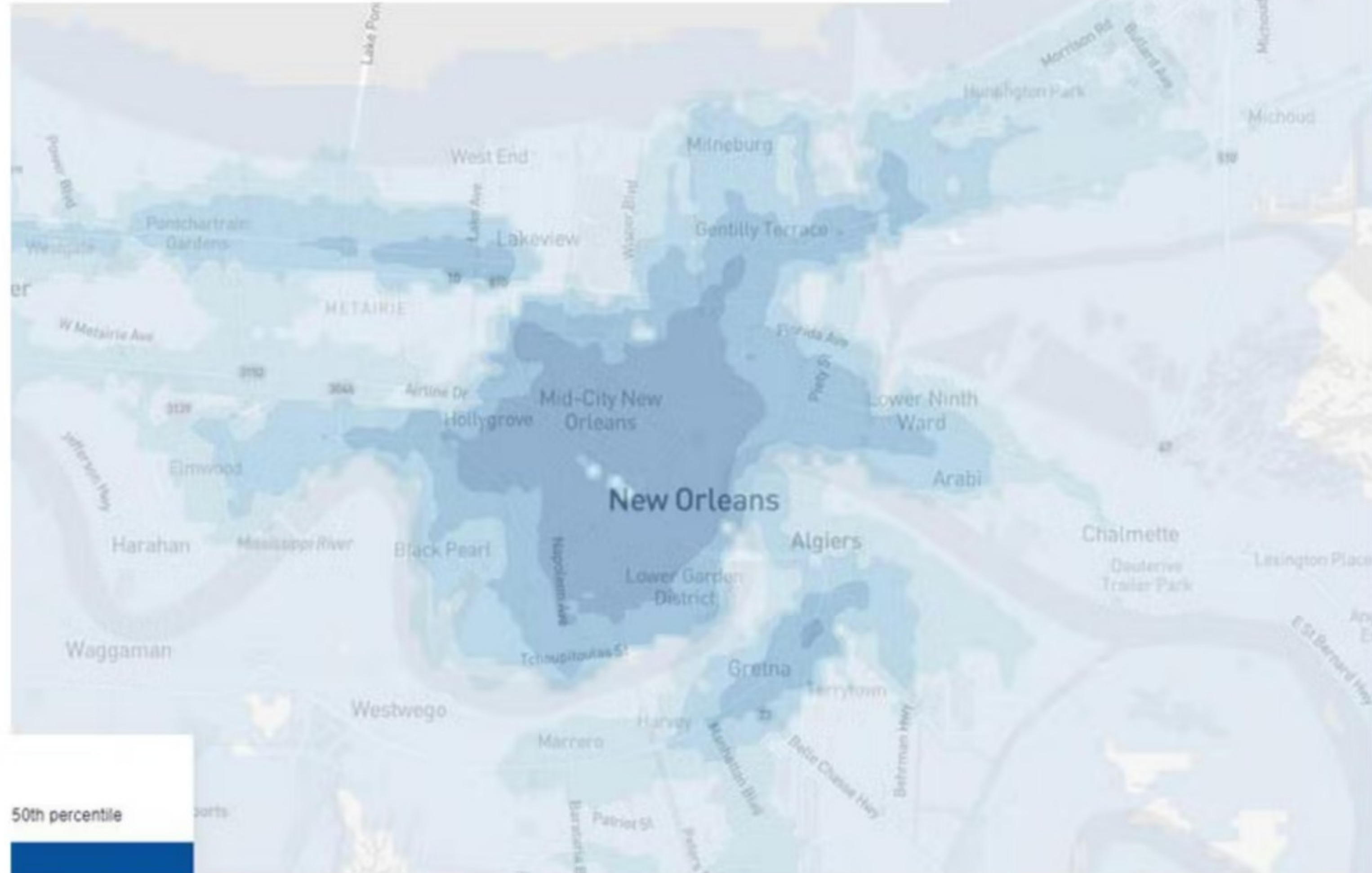
Connect to Opportunities

BRT GOALS

Job Density in Region



Increased Job Access within 45m on New Links Network



Light Rail (LRT) vs Bus Rapid Transit (BRT)



Agency: Metro Transit
Location: Minneapolis, MN
Opened: 2024
Corridor Length: 14.5 Miles
36 Stations
Capital Cost: \$2.03 Billion



Agency: Albuquerque Transit Dept
Location: Albuquerque, NM
Opened : 2017
Corridor Length: 8.8 Miles
18 Stations
Capital Cost: \$134 Million

BRT can provide similar benefits and more cost effective than LRT.

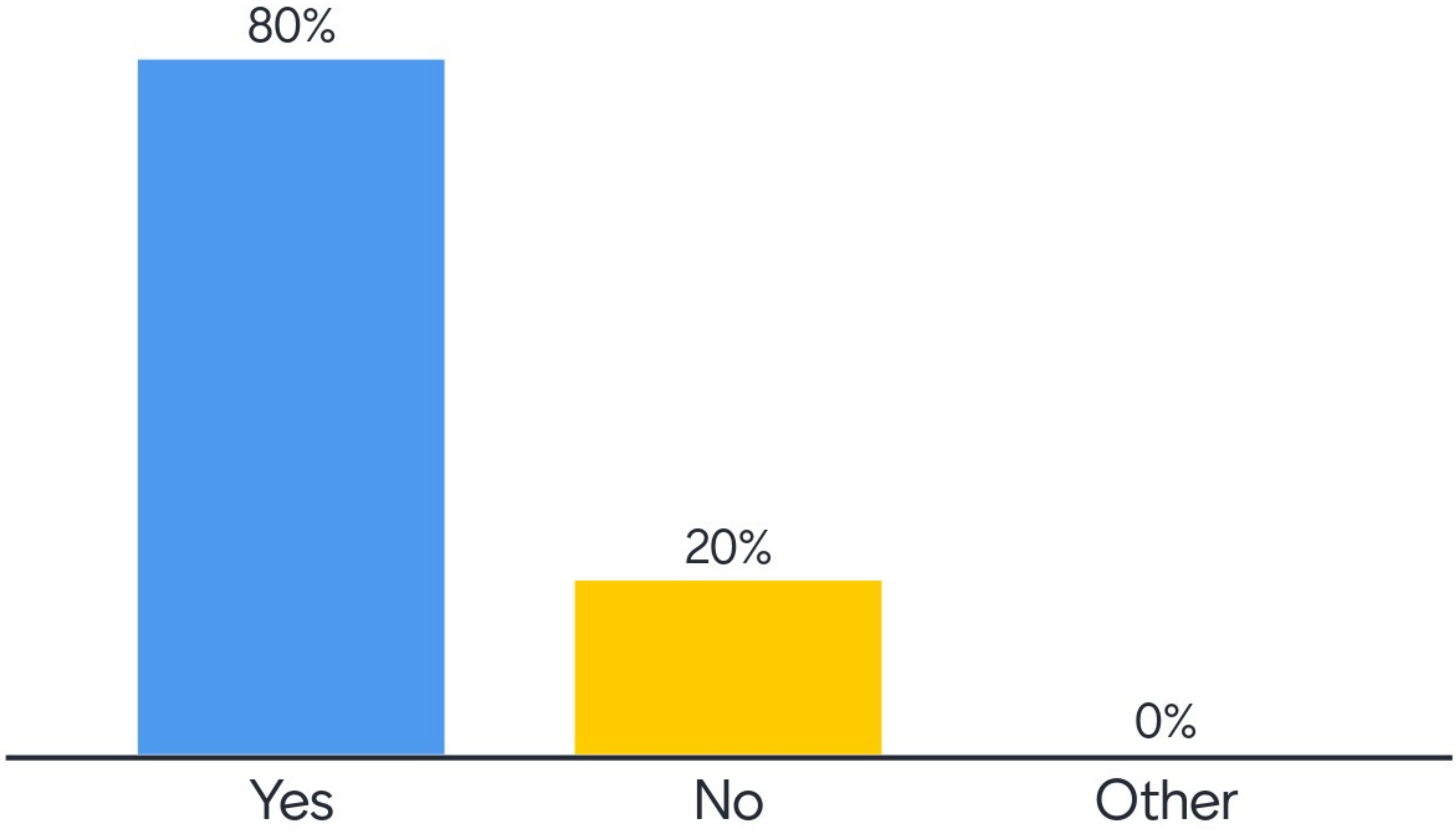
Light Rail Transit

\$75-150M per mile

Bus Rapid Transit

\$5-20M per mile

Will the Pelicans make it to the playoffs?

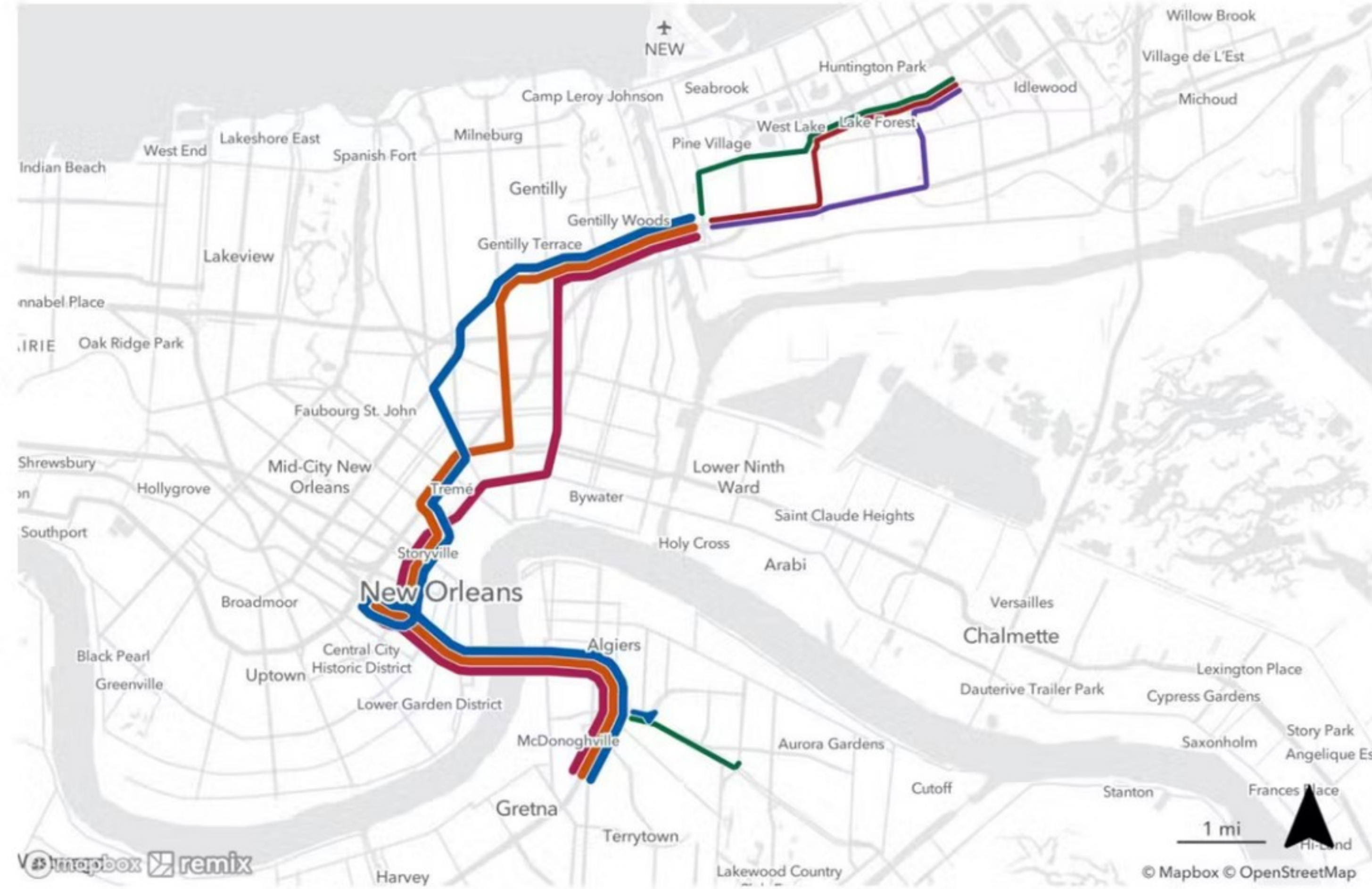


Potential Routes

DEFINING THE ROUTE

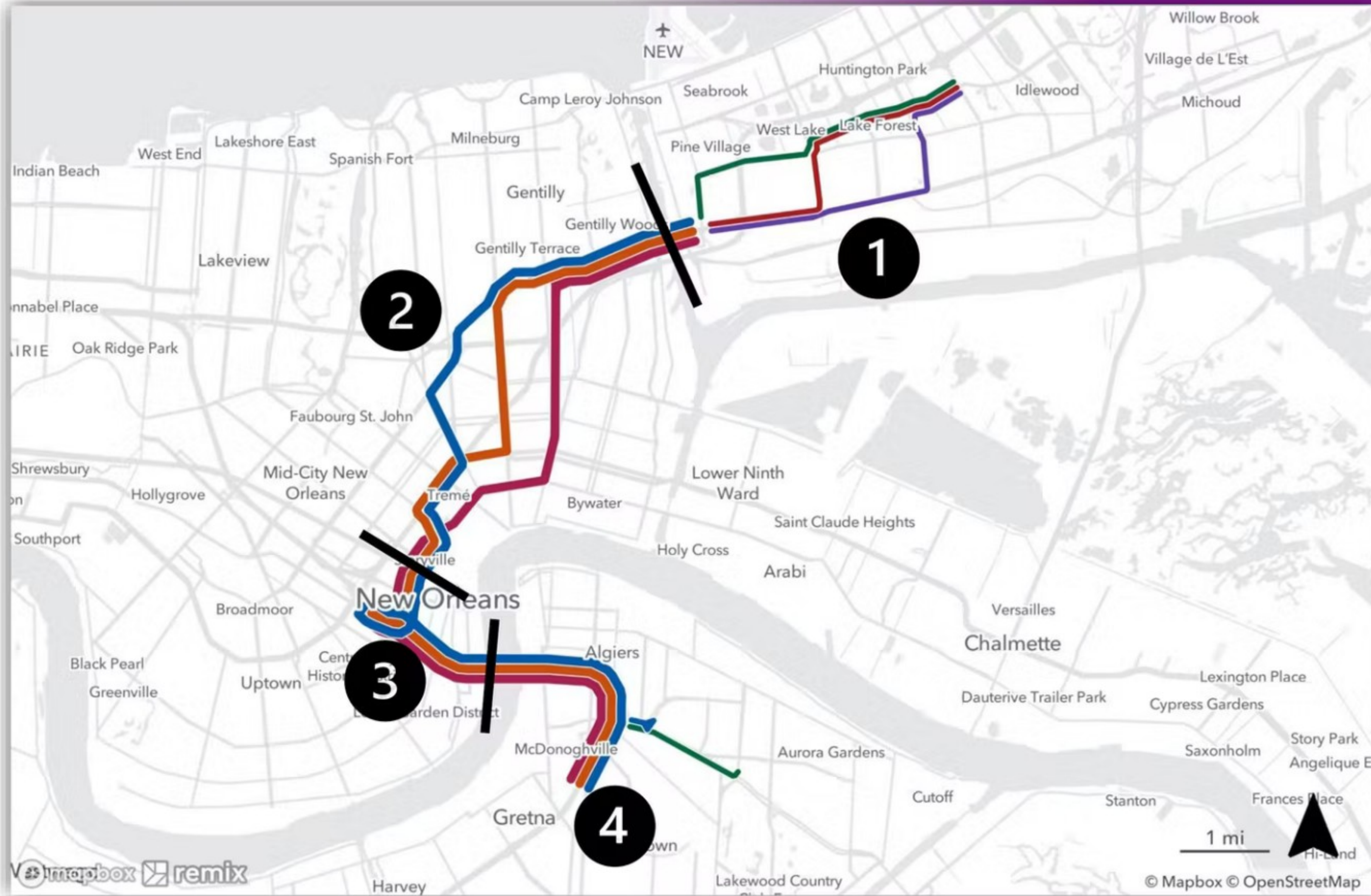
KEY NODES

- ★ New Orleans East Transfer Hub
- ★ Danziger Bridge
- ★ Gentilly Transfer Hub
- ★ Downtown Transit Center
- ★ Crescent City Connection
- Wilty Terminal (Gretna)
- Algiers Park-n-Ride



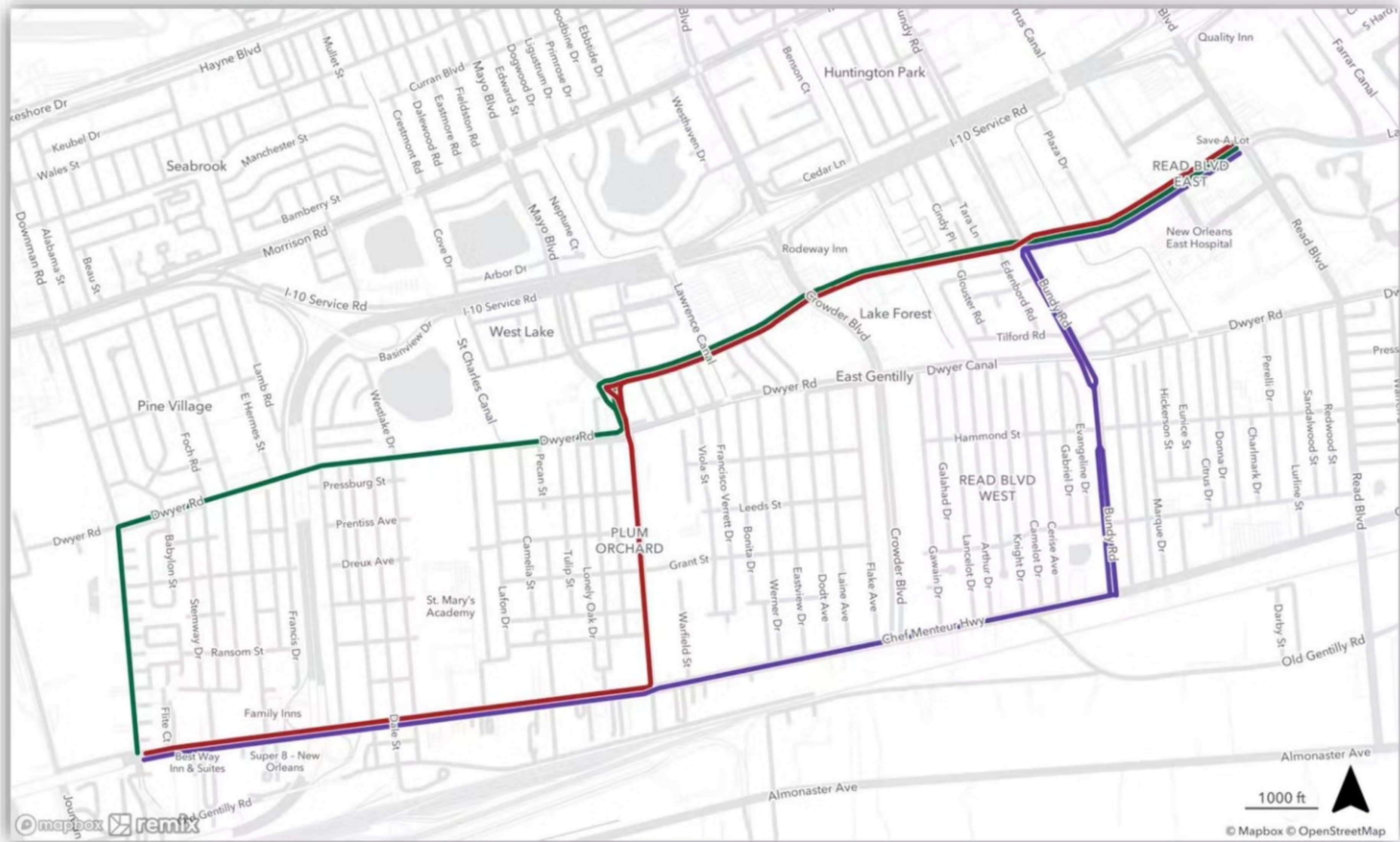
Potential Routes

DEFINING THE ROUTE



Potential Routes – Segment 1

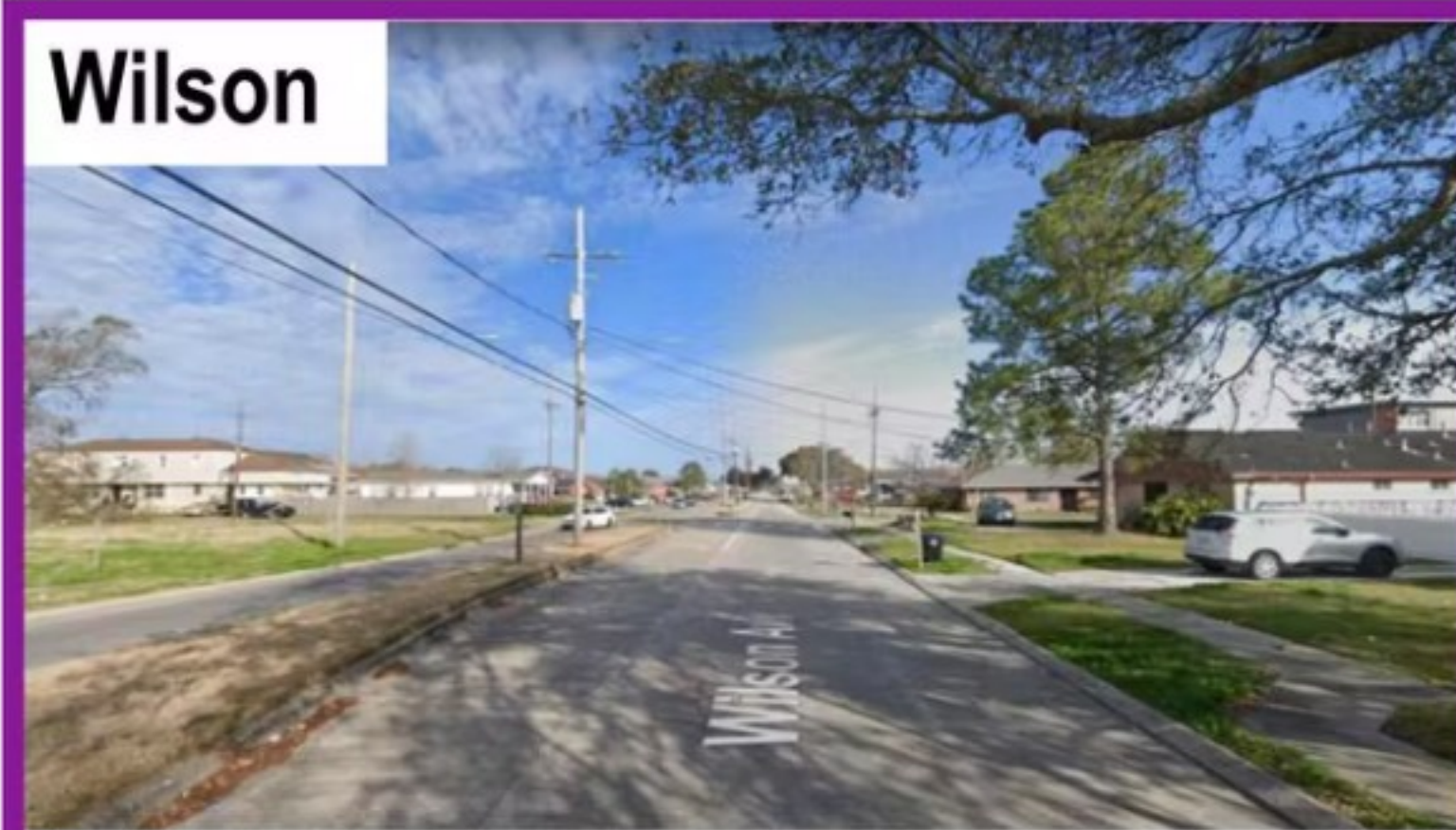
DEFINING THE ROUTE



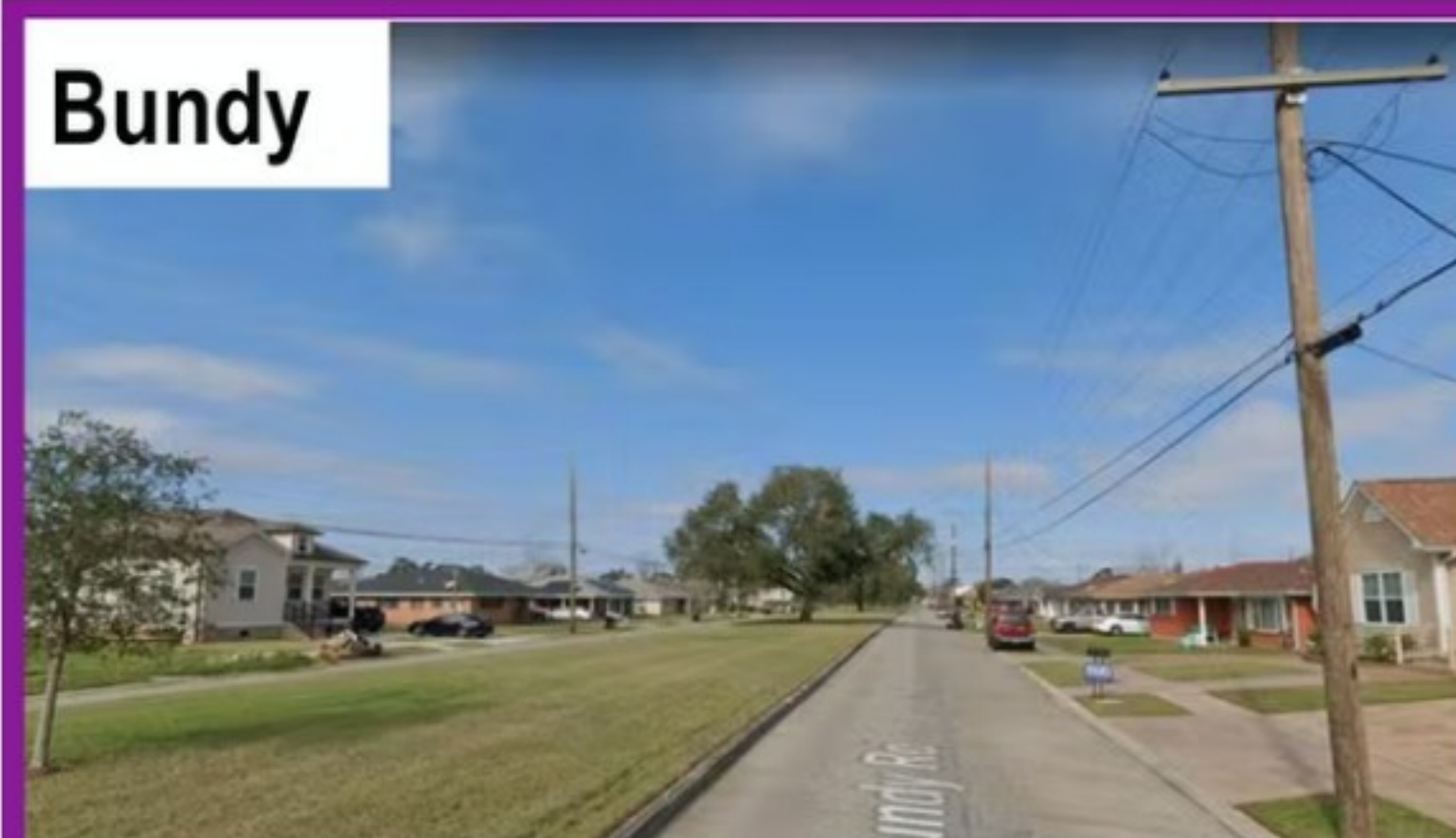
Potential Routes – Segment 1

DEFINING THE ROUTE

Option 1A:



Option 1B:



Option 1C:



Option 1A:

Key Destinations:

- New Orleans East Hospital
- KIPP Morial School
- Livingston Collegiate Academy

Key Statistics:

- 687 Employment per SqMi
- 3,114 Population per SqMi
- 7 Essential Service Connections

Option 1B:

Key Destinations:

- New Orleans East Hospital
- Schaumburg Elementary

Key Statistics:

- 602 Employment per SqMi
- 3,296 Population per SqMi
- 9 Essential Service Connections

Option 1C:

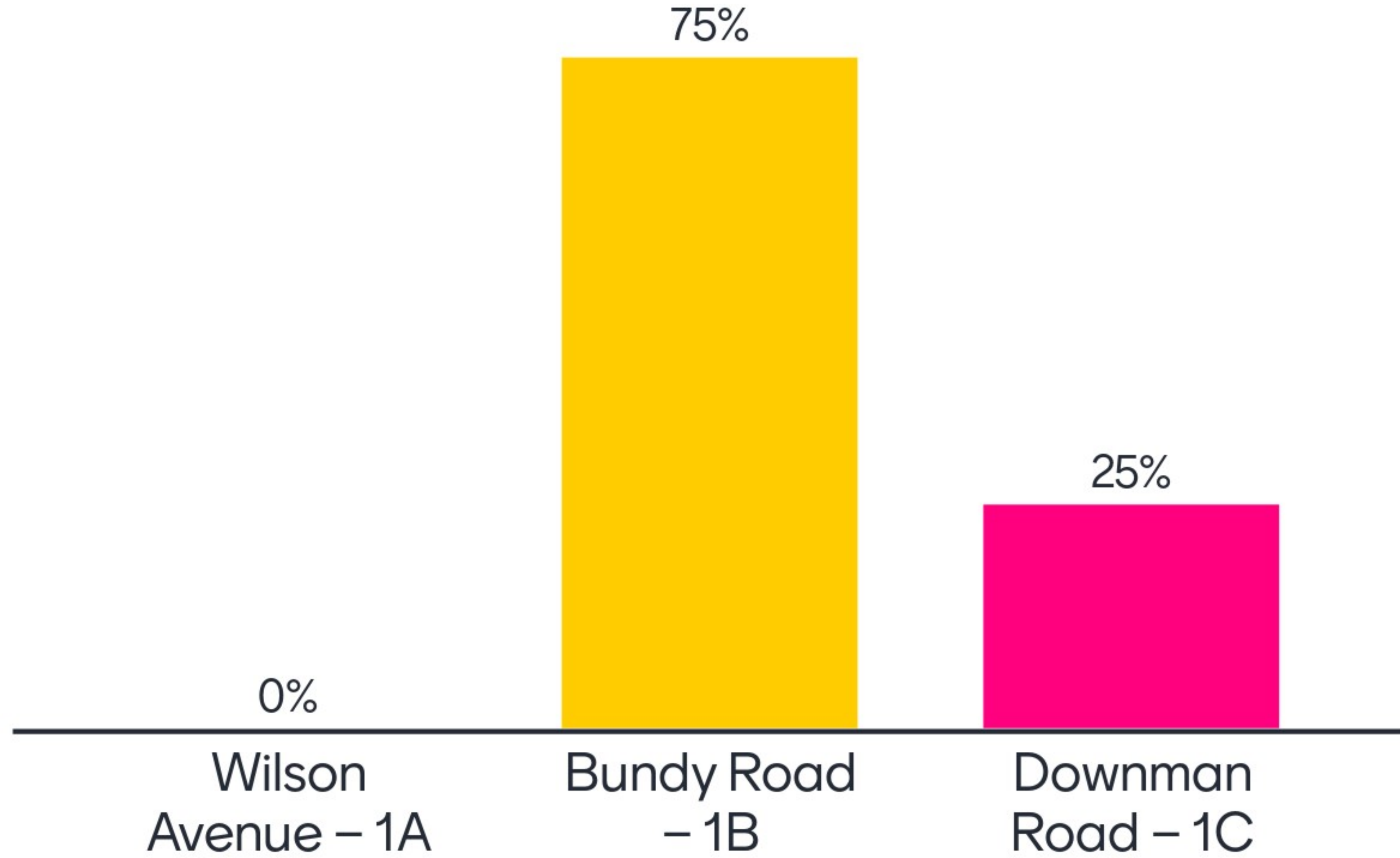
Key Destinations:

- New Orleans East Hospital
- Livingston Collegiate Academy
- KIPP East Community Primary

Key Statistics:

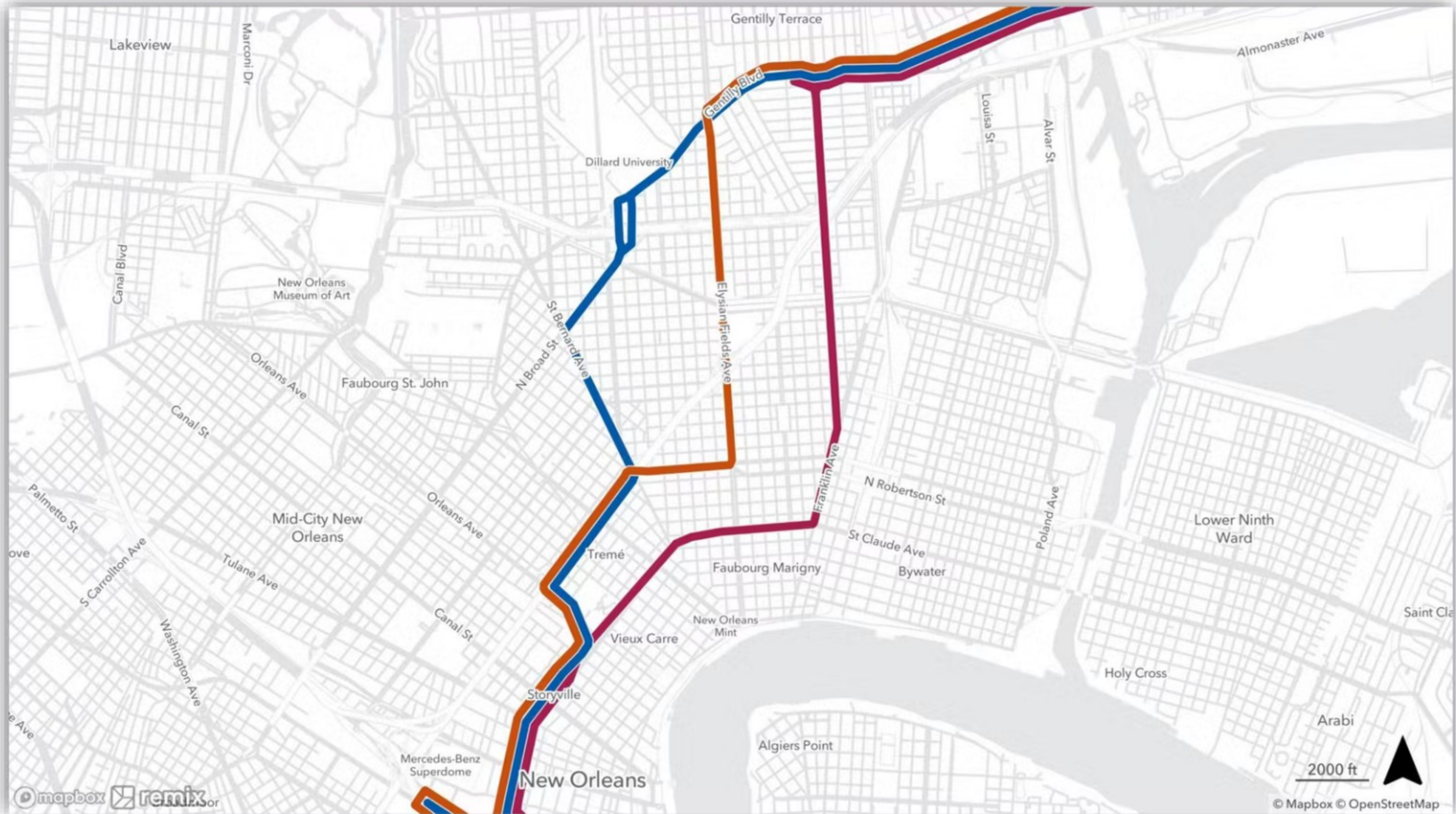
- 938 Employment per SqMi
- 3,379 Population per SqMi
- 4 Essential Service Connections

What is your preferred route for Segment 1?



Potential Routes – Segment 2

DEFINING THE ROUTE



Potential Routes – Segment 2

DEFINING THE ROUTE

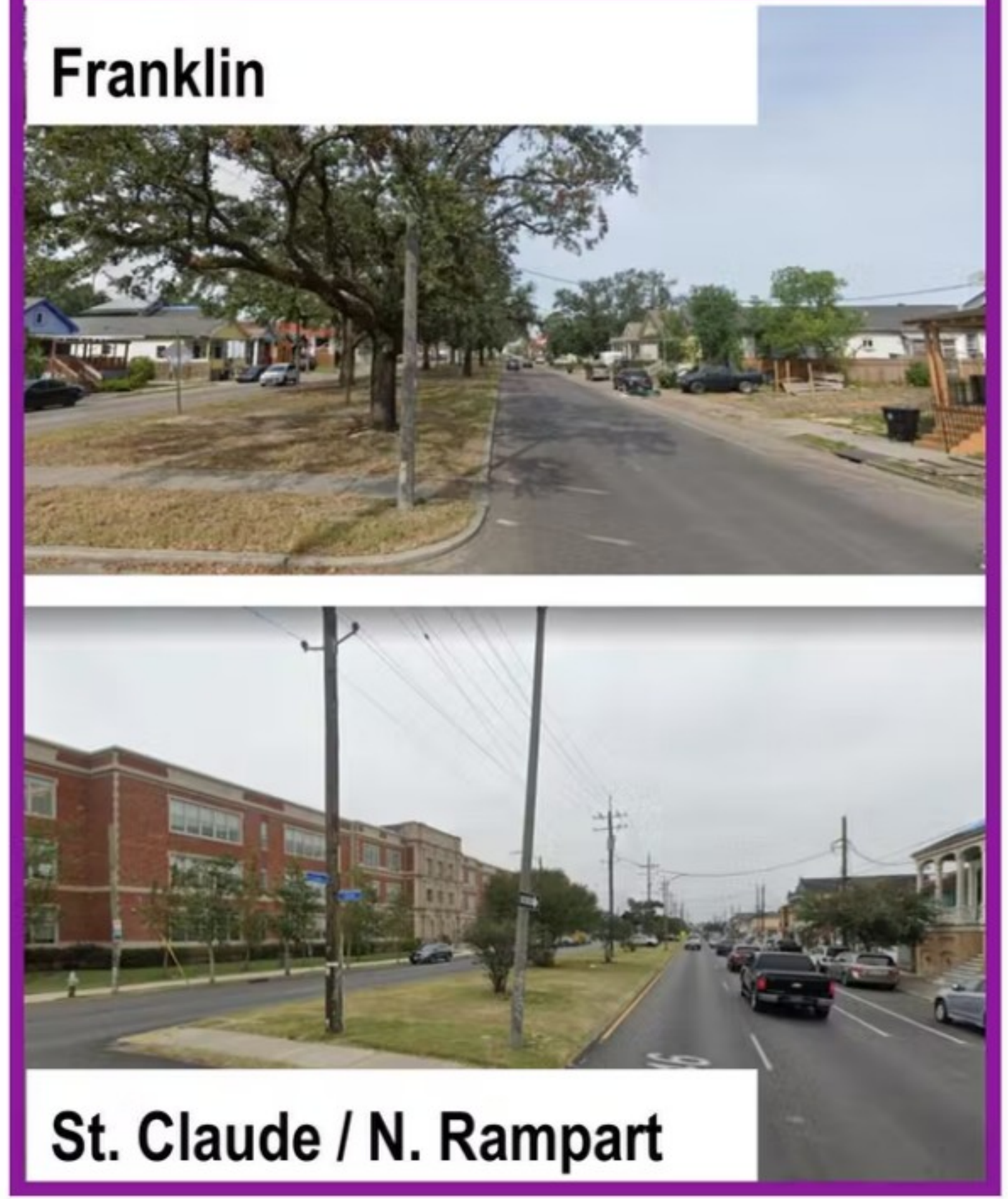
Option 2A:



Option 2B:



Option 2C:



Option 2A:

Key Destinations:

- Dillard University
- Morris Jeff Community School
- Nova Nora Library

Key Statistics:

- 7,334 Employment per SqMi
- 4,484 Population per SqMi
- 18 Essential Service Connections

Option 2B:

Key Destinations:

- Dillard University
- Morris Jeff Community School
- Crescent Care

Key Statistics:

- 7,236 Employment per SqMi
- 4,450 Population per SqMi
- 19 Essential Service Connections

Option 2C:

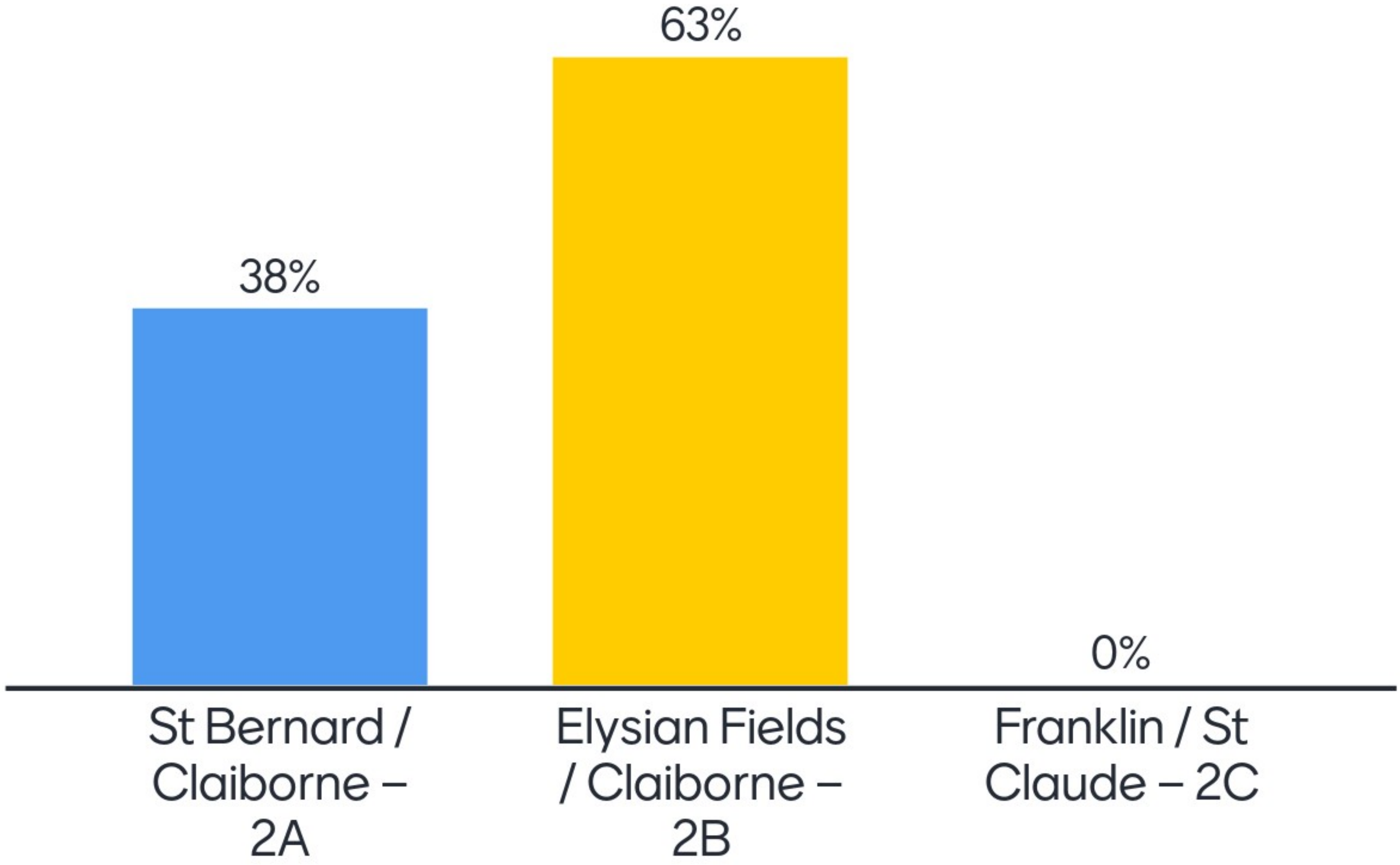
Key Destinations:

- French Quarter/Marigny

Key Statistics:

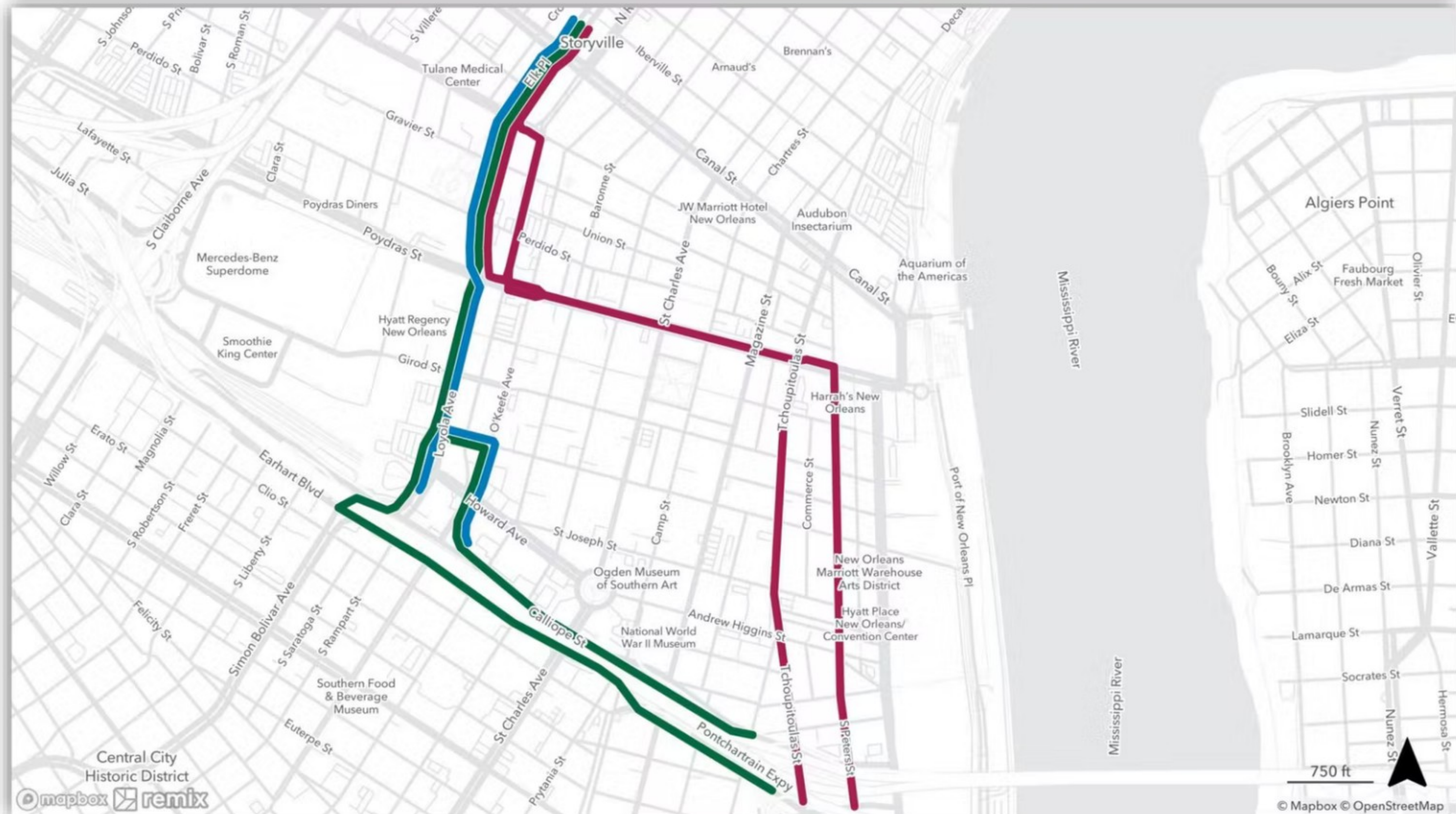
- 6,787 Employment per SqMi
- 4,705 Population per SqMi
- 20 Essential Service Connections

What is your preferred route for Segment 2?



Potential Routes – Segment 3

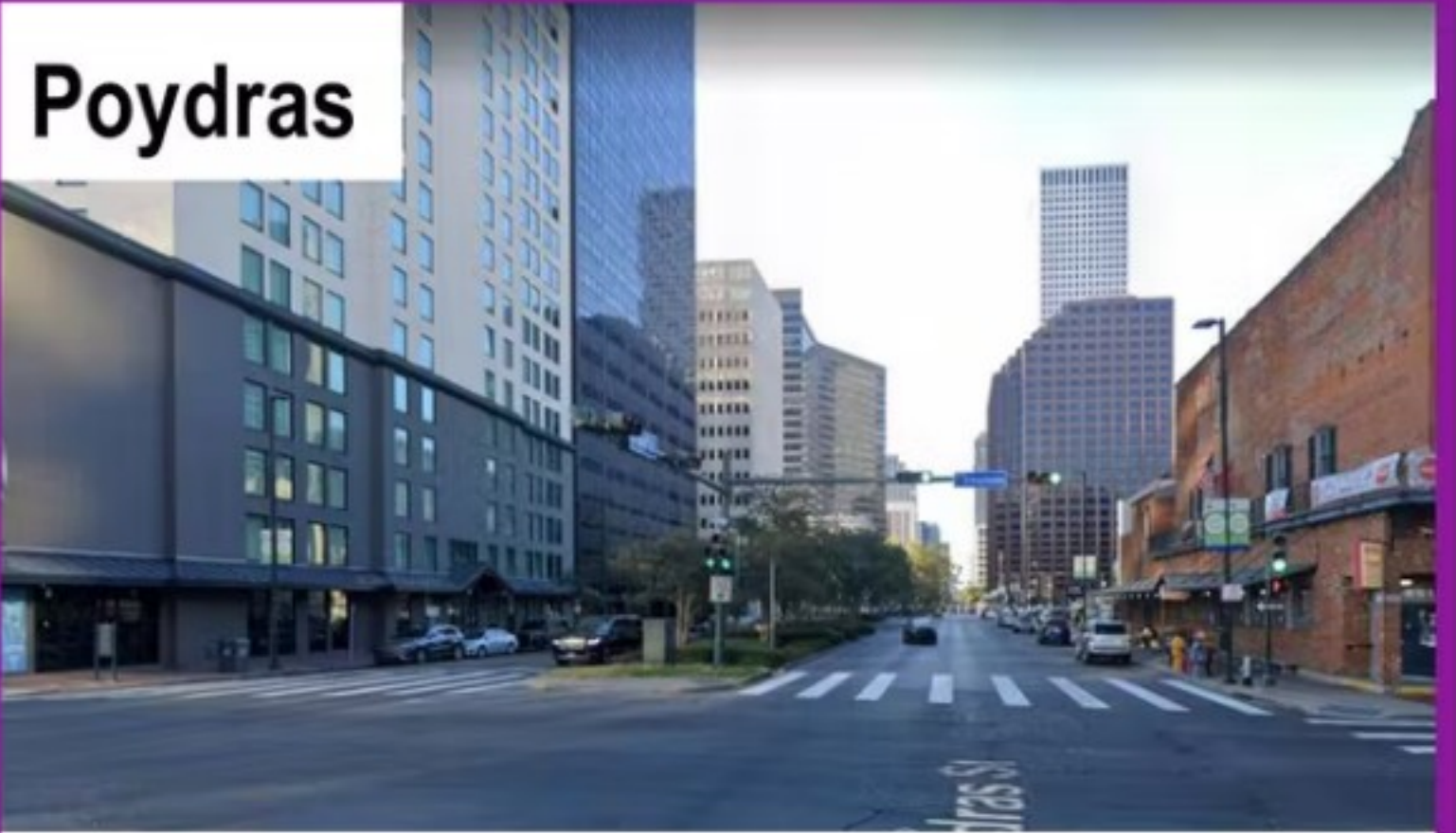
DEFINING THE ROUTE



Potential Routes – Segment 3

DEFINING THE ROUTE

Option 3A:



Option 3B:



Option 3C:



Option 3A:

Key Destinations:

- Tulane Medical Center
- CBD
- Convention Center

Key Statistics:

- 40,244 Employment per SqMi
- 2,891 Population per SqMi
- 4 Essential Service Connections

Option 3B:

Key Destinations:

- Tulane Medical Center
- Union Passenger Terminal
- Transfer to Uptown

Key Statistics:

- 38,125 Employment per SqMi
- 4,353 Population per SqMi
- 2 Essential Service Connections

Option 3C:

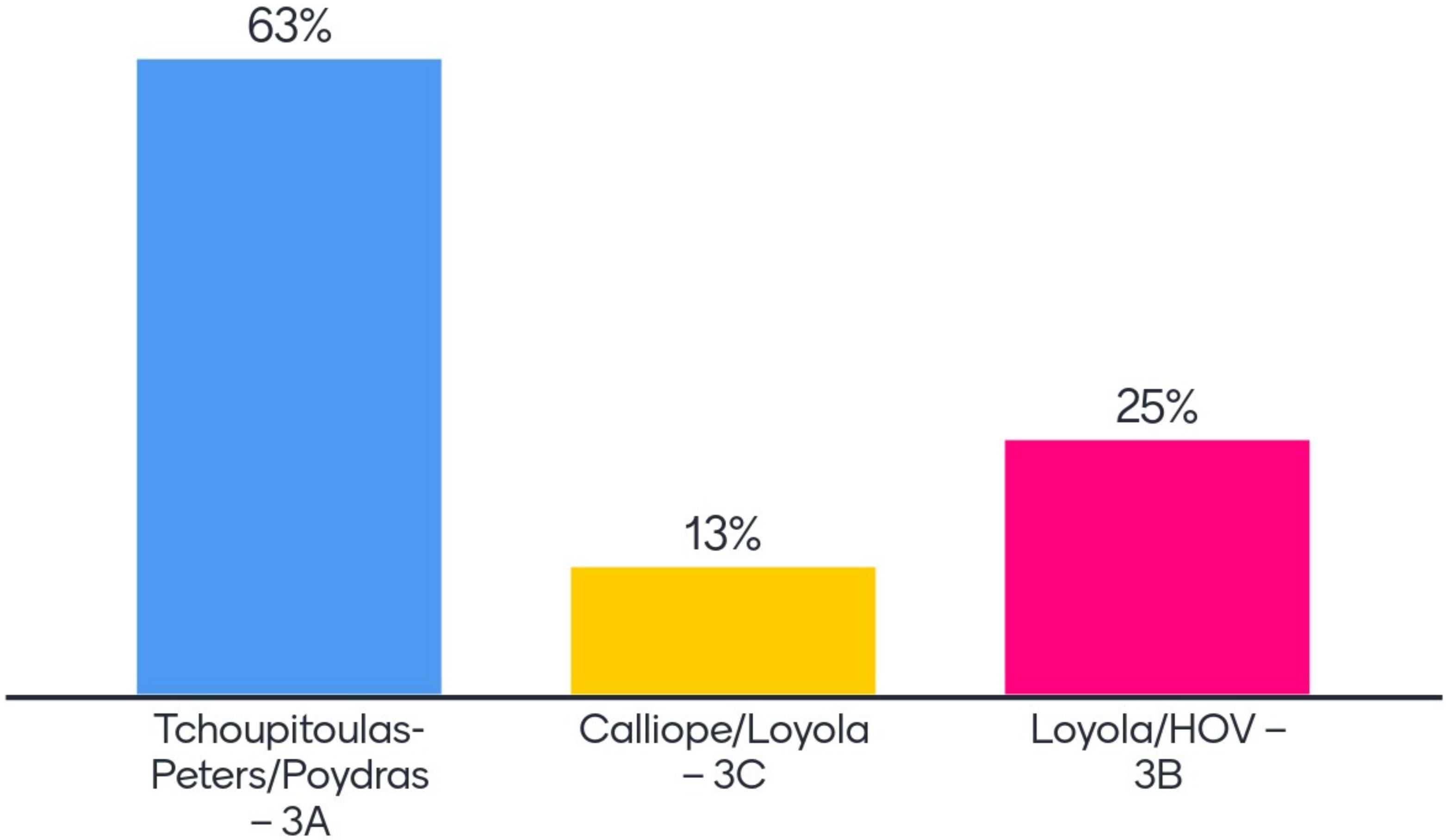
Key Destinations:

- Tulane Medical Center
- Union Passenger Terminal

Key Statistics:

- 53,248 Employment per SqMi
- 3,917 Population per SqMi
- 2 Essential Service Connections

What is your preferred route for Segment 3?



YOUR INPUT

What questions and comments do you have with the route options?

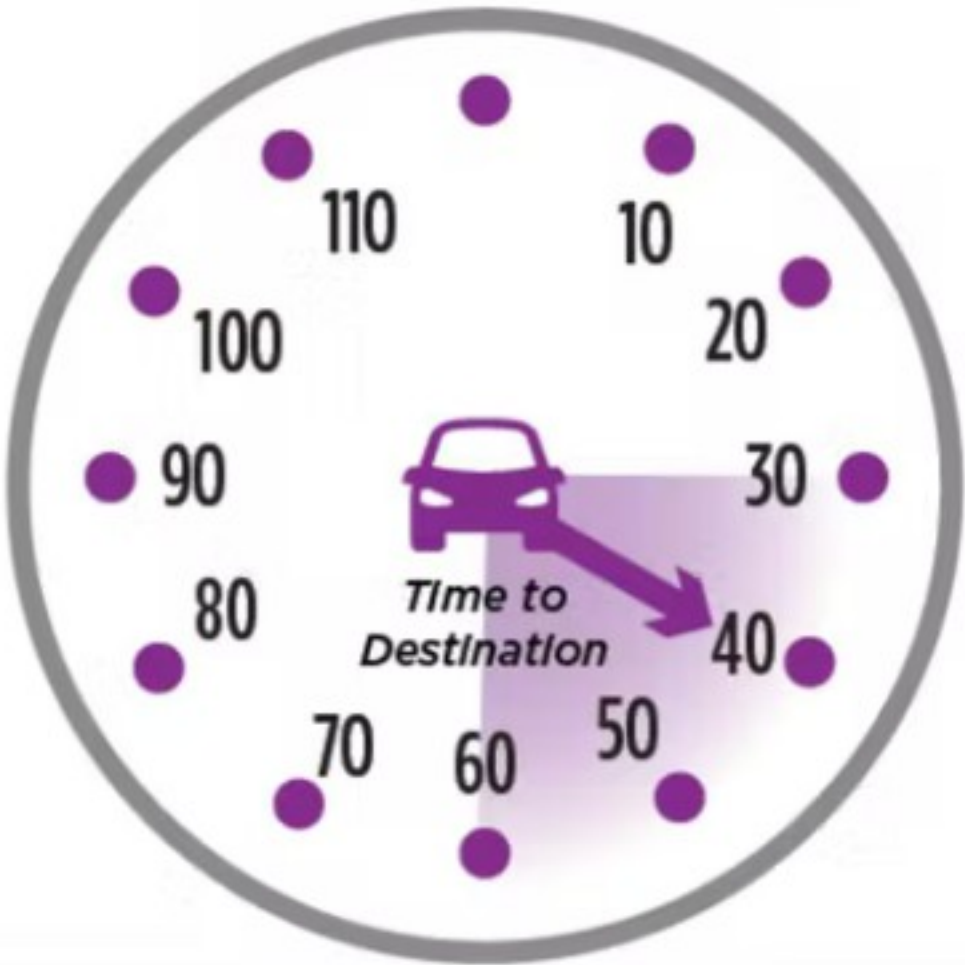
DEFINING TRANSIT PRIORITY

Travel Time: New Orleans East to Downtown

Driving Alone



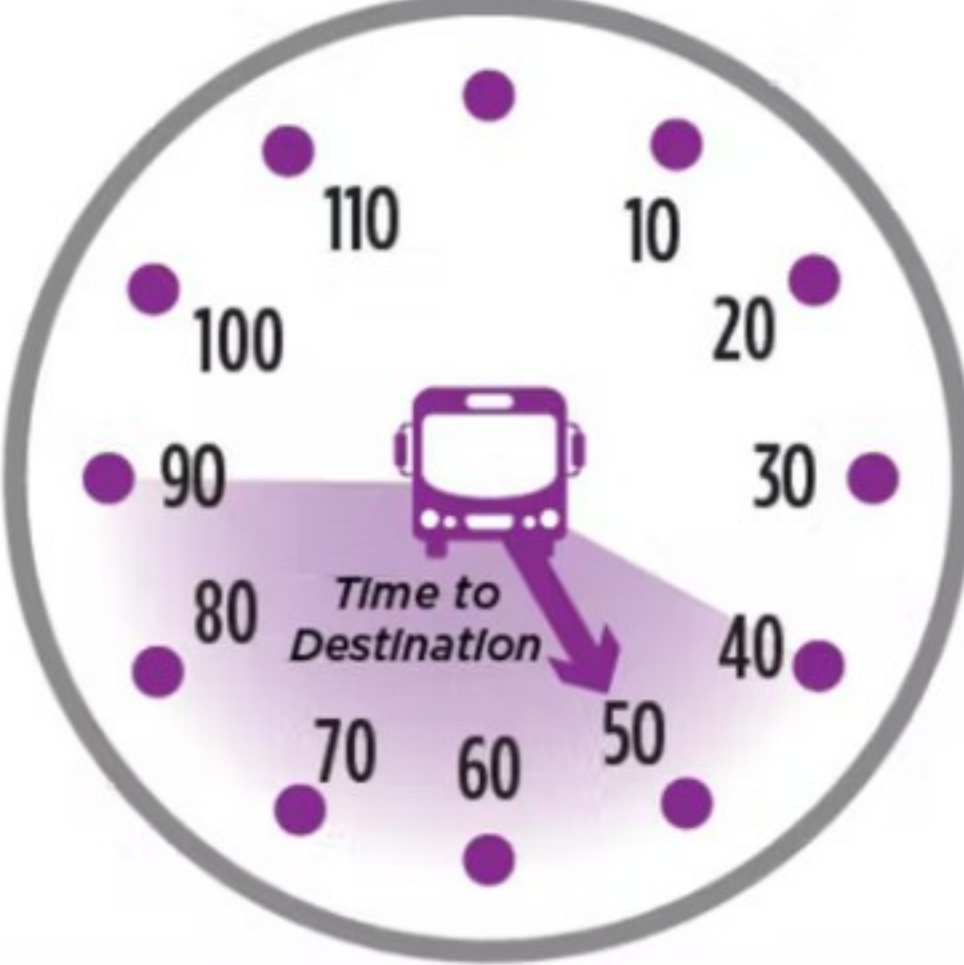
30-60m | 40m avg



BRT Mixed Traffic



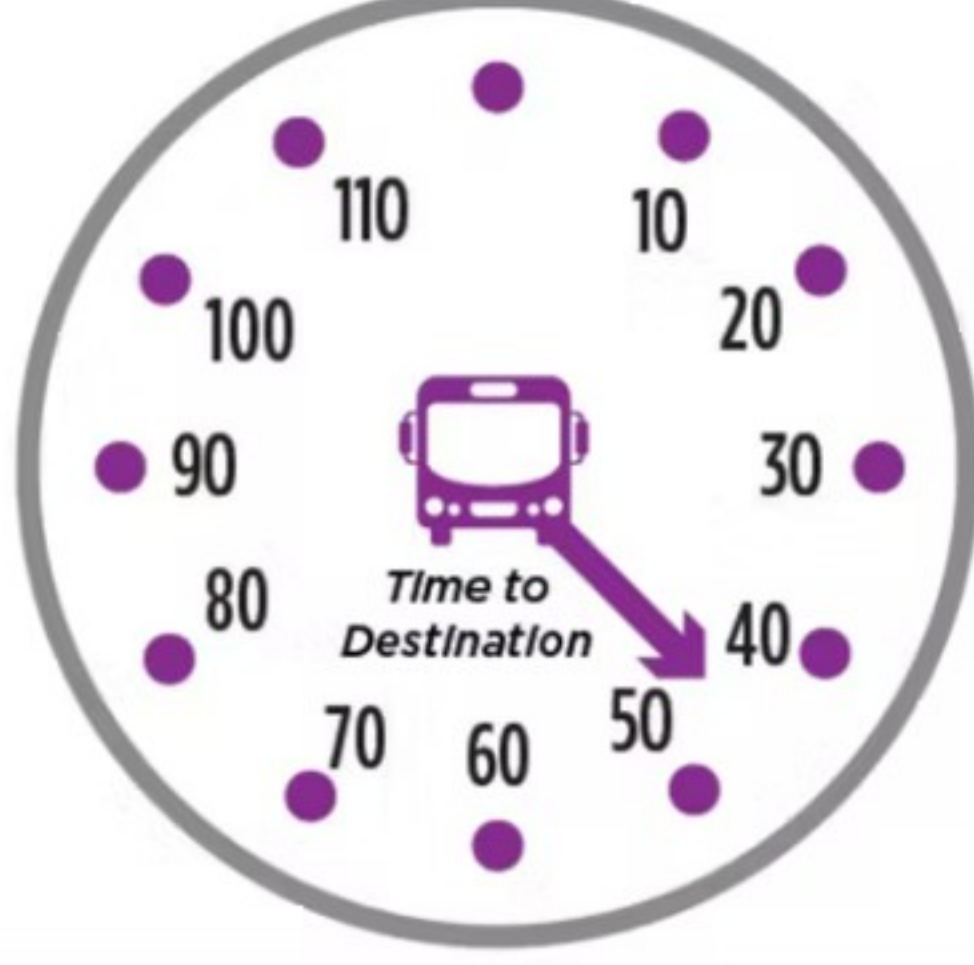
40-90m | 50m avg



BRT Dedicated Lanes



45m



Travel Time: New Orleans East to Downtown

Curb-running BRT

- BAT Lane (Business Access and Transit)
- Dedicated Lane (Fixed Guideway)
- Driveway/On-Street Parking conflicts
- Lower capital cost

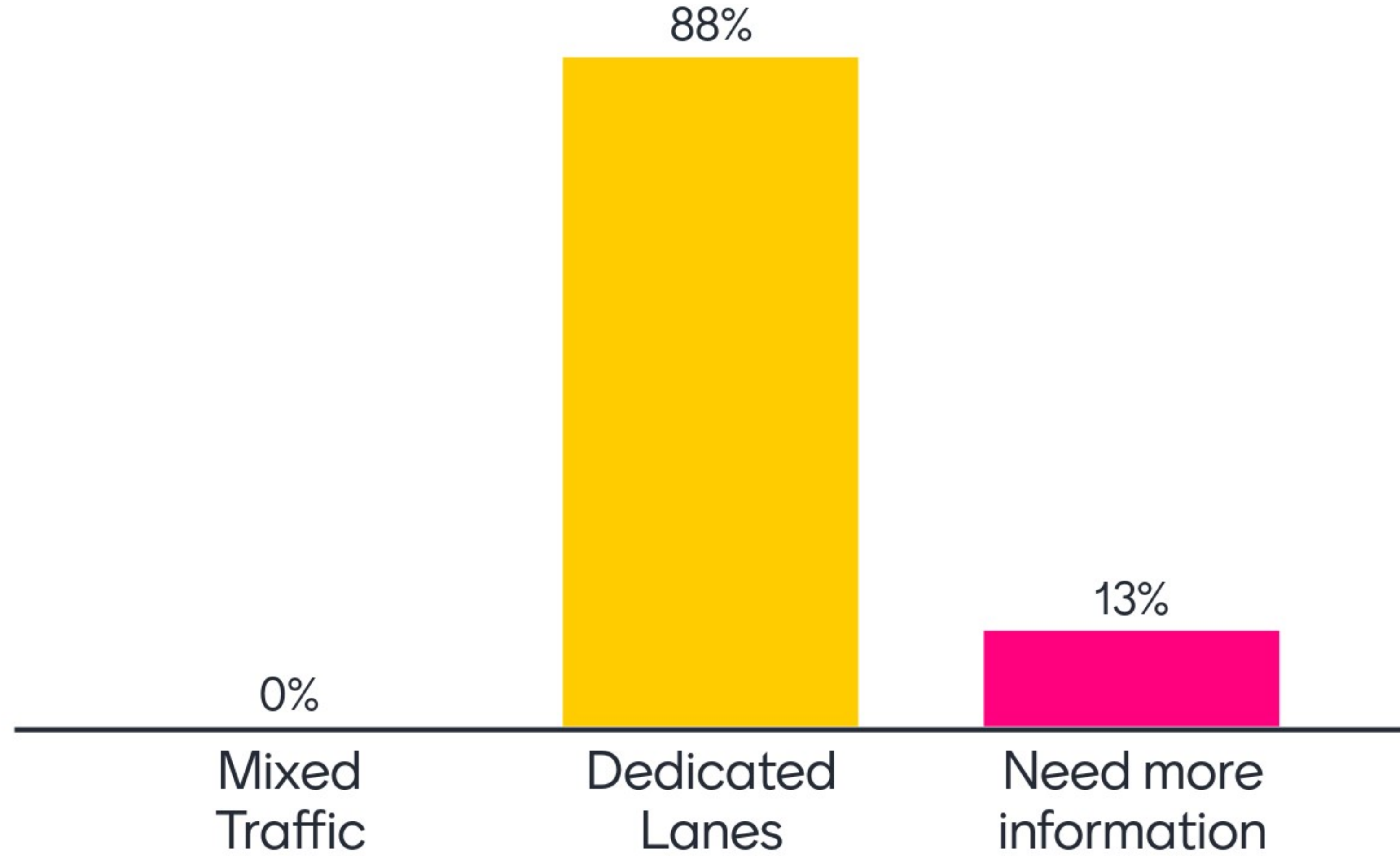


Center-running BRT

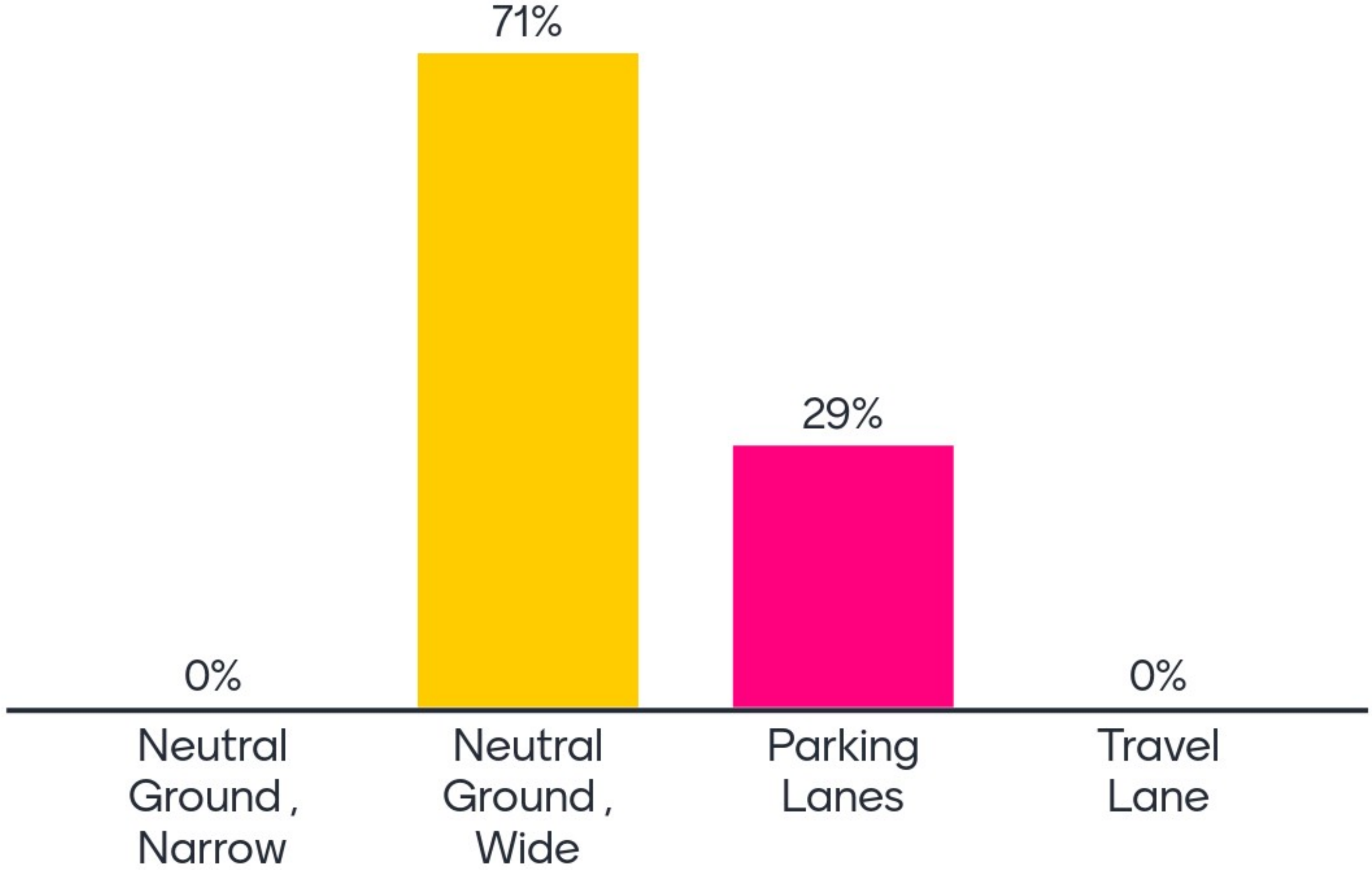
- Dedicated Lane (Fixed Guideway)
- Fewer traffic conflicts
- Highest transit priority
- Left turn impacts
- Higher capital costs



What guideway option do you prefer for BRT?



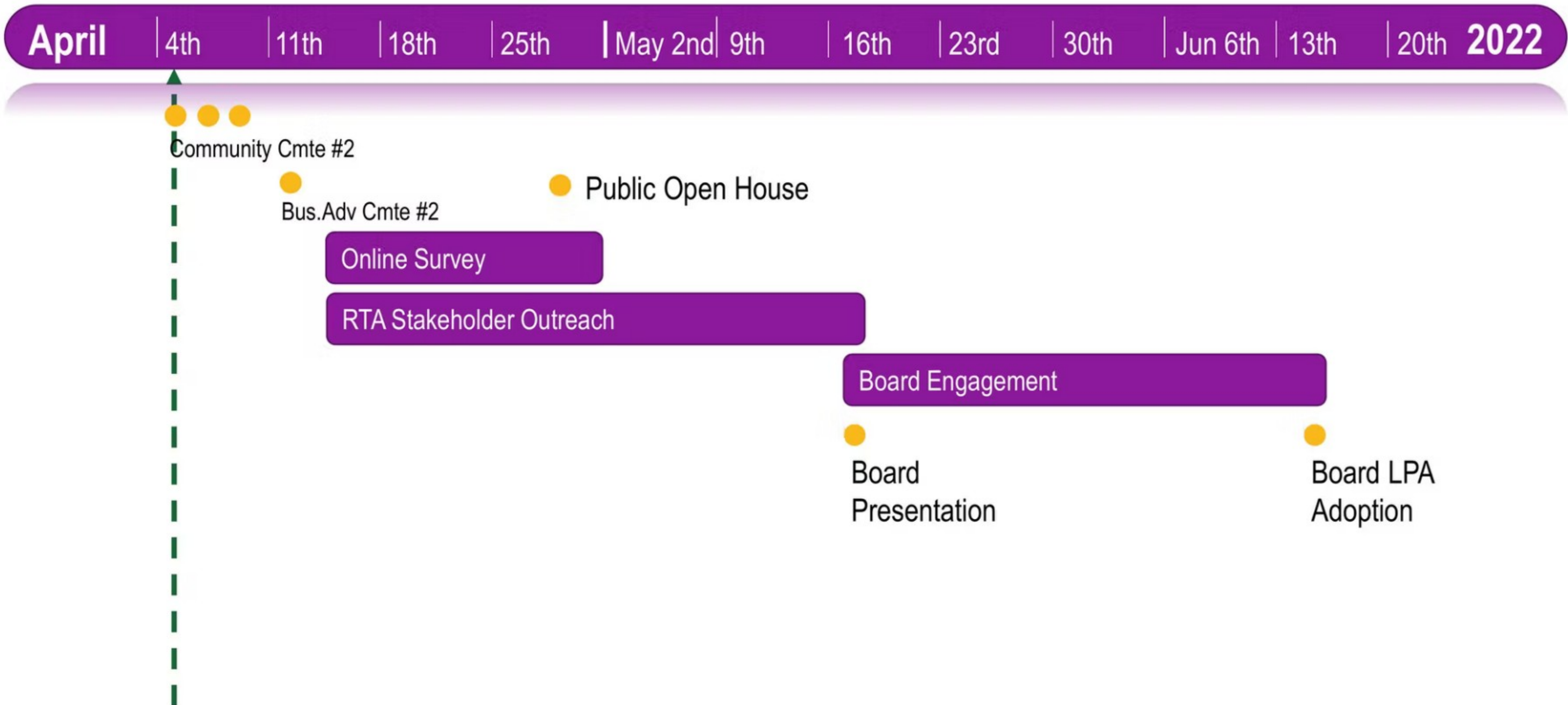
What trade offs do you currently support for fast and reliable transit?



YOUR INPUT

What questions and comments do you have with defining transit priority?

ENGAGEMENT SCHEDULE

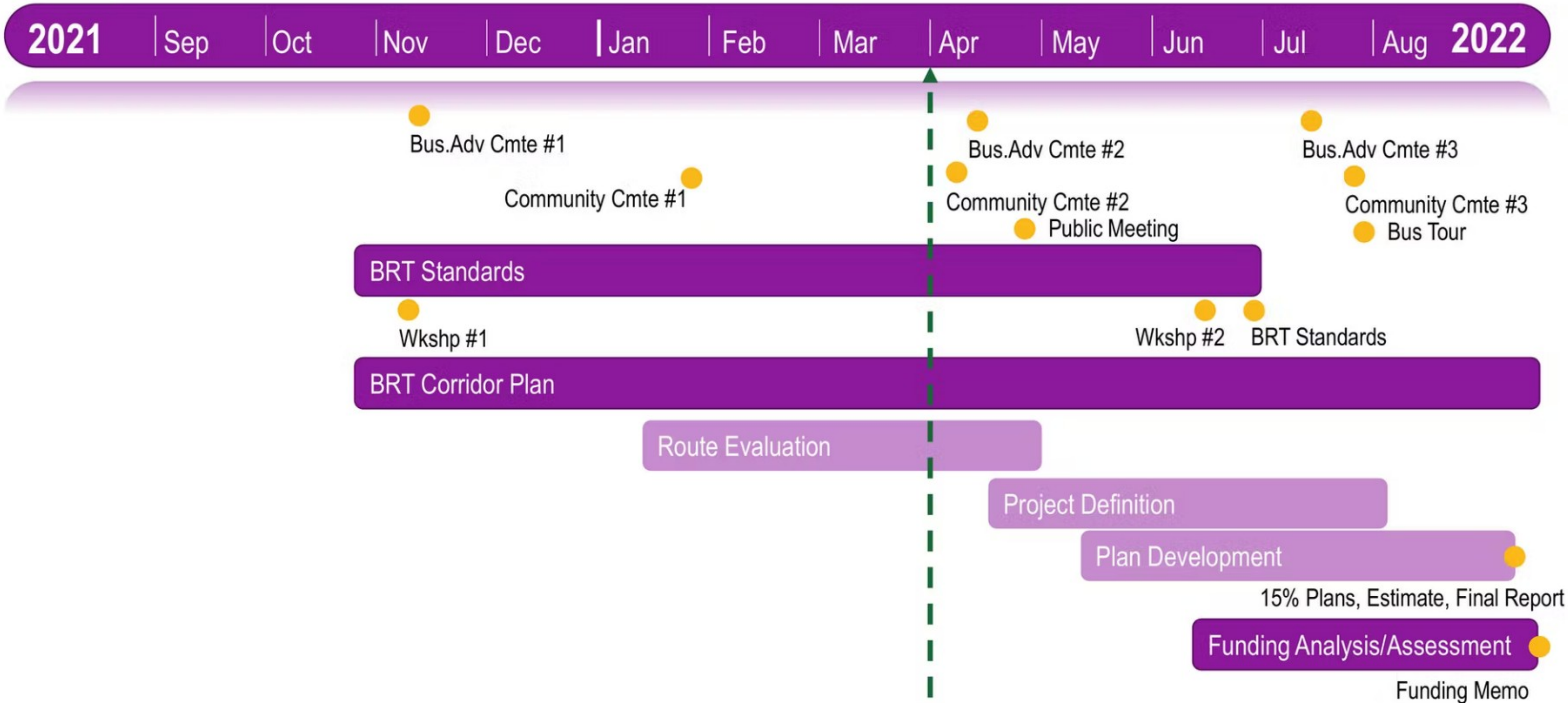


Your Input

- Social Media Campaign including Advertisements
- Email Campaign
- Media Campaign
- Neighborhood Associations Meeting
- BRT Open House Public Meeting
- BRT Ride Along

How can you help us promote public feedback?

PROJECT SCHEDULE



PUBLIC ENGAGEMENT



SEND US YOUR COMMENTS:

BRT@rtaforward.org

