

Specifications attachments:

EZ-SCREEN™ IOOOXL PORTABLE SCREENER

December 4, 2025

FEATURES:

- Frame is constructed of structural tube steel which reduces vibration, decreasing susceptibility to cracks and structural failure that is common with C-channel often found on inexpensive screeners
- All EZ-Screen surfaces are a durable *baked powder coat finish*
- Loading bucket size range up to an 8' wide bucket. Matched to work with 1h to 1-1/2 yard loaders. Inside access for bucket 9'4" Feed height at hopper 8'3"
- Double deck 6'x 5' Screen Box with end tensioned screens
- KOHLER™ KD15-440 single cylinder air-cooled diesel engine, 10-HP with hour meter and electric start as standard
- Fully enclosed, lockable engine compartment and starter panel
- Duracell™ "AGM" battery for long life in a vibratory environment
- Patented non-hydraulic EZ-Kinetic Screen Drive
- Dual-stage air filter system with pre-cleaner
- Tow hitch has safety chains, 7,000 lb. capacity jack, break-away controller and can be equipped with either 3" lunette ring or 2-5/16" ball hitch option available
Sealed wiring harness for legal towing
- 6,000 lb. capacity axle on rear with EZ-Screen exclusive hand activated pivoting Assembly with electric brakes.
- 225/75 R15 "E" range 8 ply trailer tires plus detachable mudflaps
- High-speed 5-lug bolt pre-greased hub set
- Dimensions: 13' 3-3/4" x 5' 8" x 8' 3" (4.06m x 1.72m x 2.52m)
- Overall weight: 5,462 lb. (2,477.52 kg)
- ***Made in USA***

SCOPE OF WORK**Rock and Dit Screen.****Job Description:**

The equipment will screen rail rocks from dirt or sand to be reused after cleaning for track repairs on the St. Charles and Riverfront.

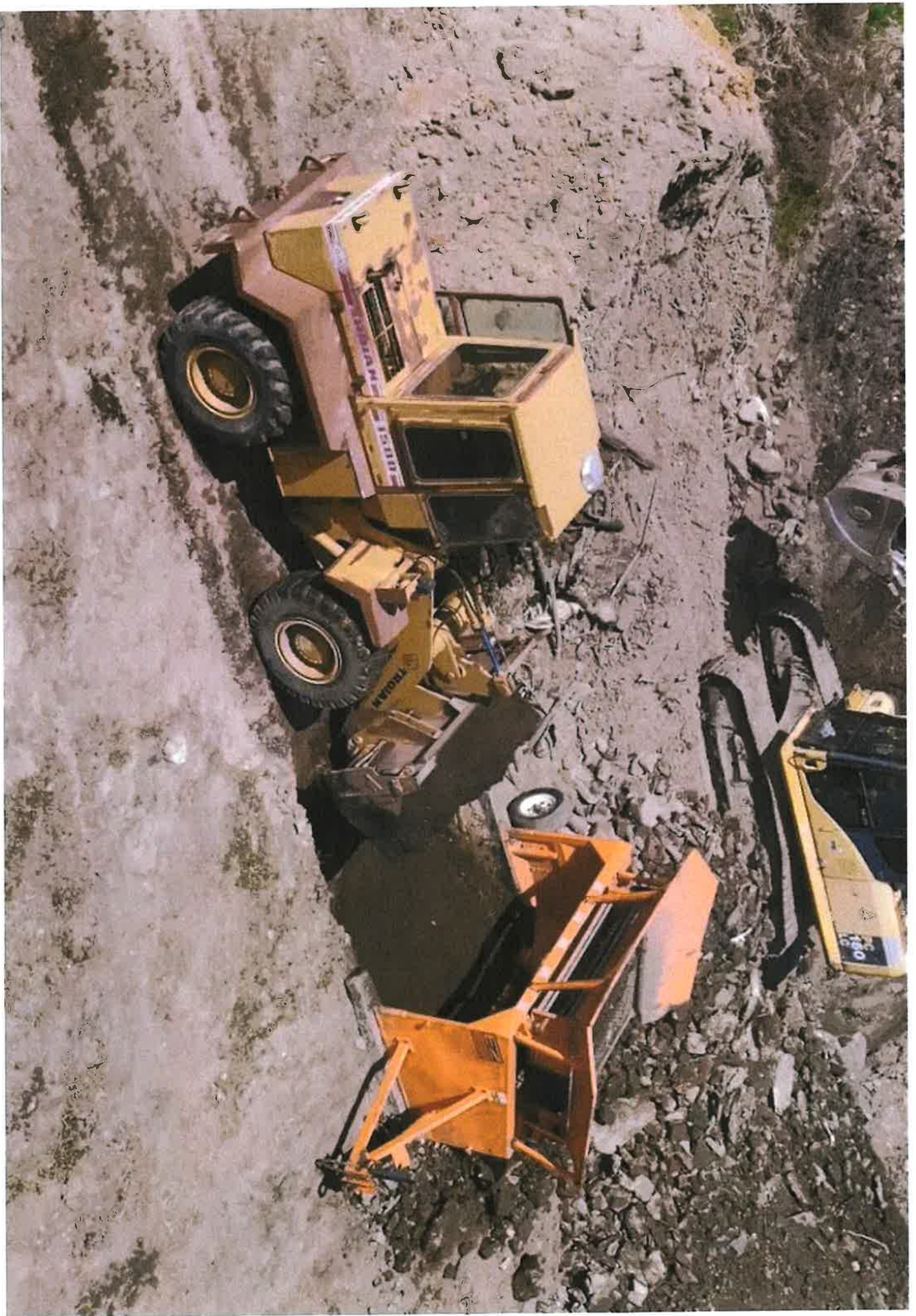
Scope:

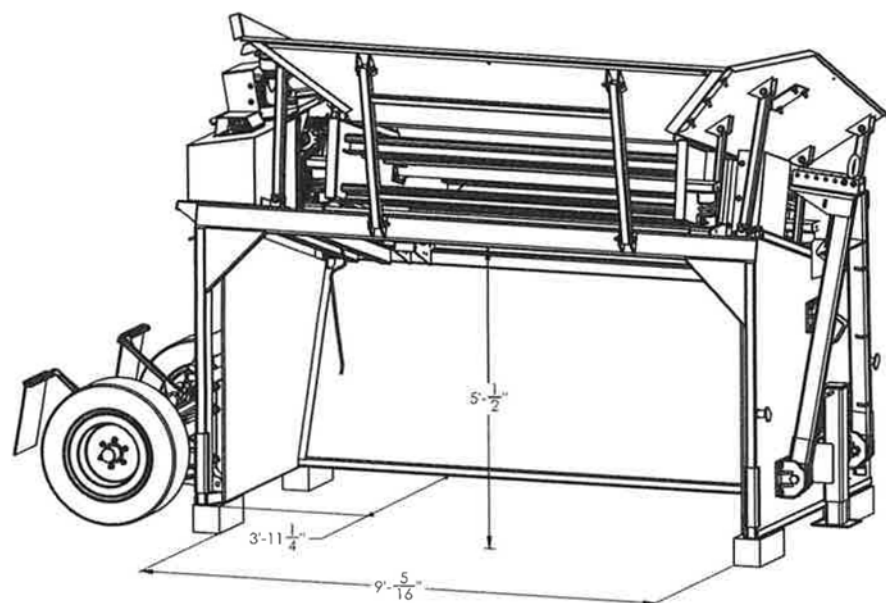
Contractor shall furnish all necessary materials for equipment. Double deck 6'X5' screen box with end tensioned screens. Duracell AGM battery for long life in a vibratory environment. Tow hitch has safety chains, 7,000 lb, capacity jack, break-a-way controller and can be sealed with harness for legal ring or 2-5/16" ball hitch option available. Kohler KD15-440 single cylinder air-cooled diesel engine. 6,000 lb. capacity axle on rear with screen exclusive hand activated hand activated pivoting assembly with electric brakes. Dimensions 13" 3-3/4 X 5' 8" X 8' 3" Overall weight 5,462 Lb. (2,477.52 Kg)

General Notes:

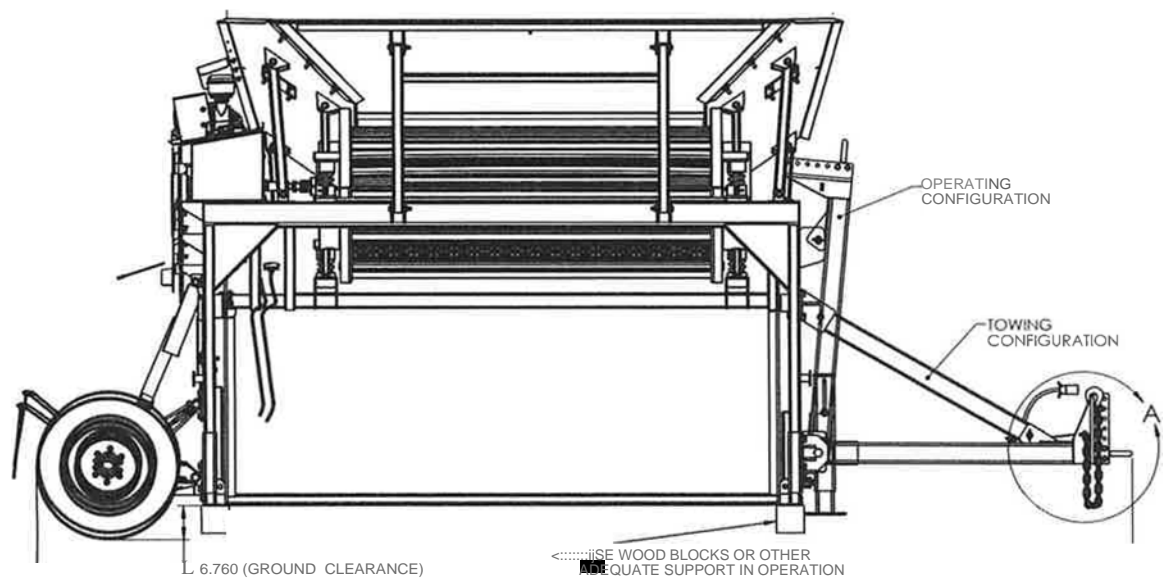
- **Contractor shall apply for and pay for all necessary permits.**
- **Contractor job site shall be maintained clean and free from debris doing vegetation applications.**
- Contractor shall bear the cost of repair of any Utility damage or Rail damage during applications.







10'-0"

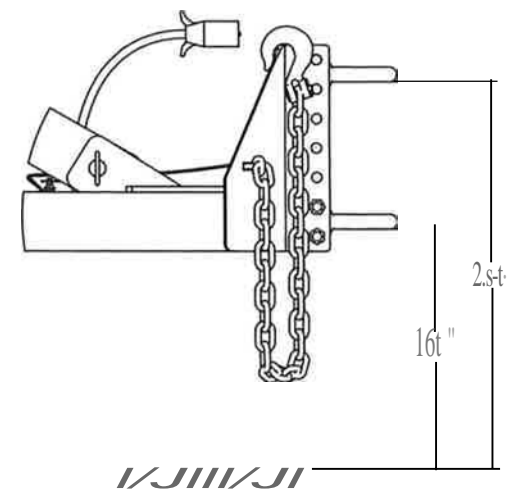


6.760 (GROUND CLEARANCE)

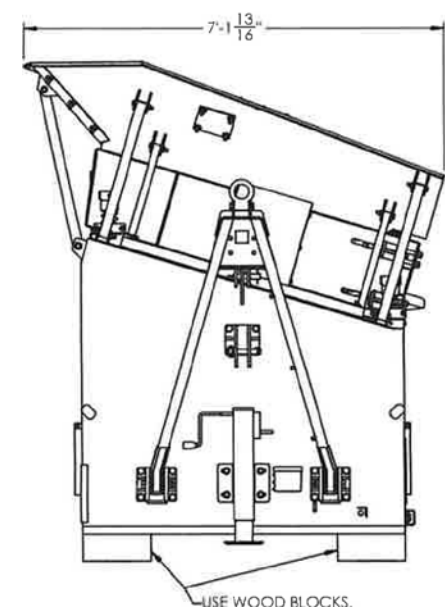
18'-11 1/2"

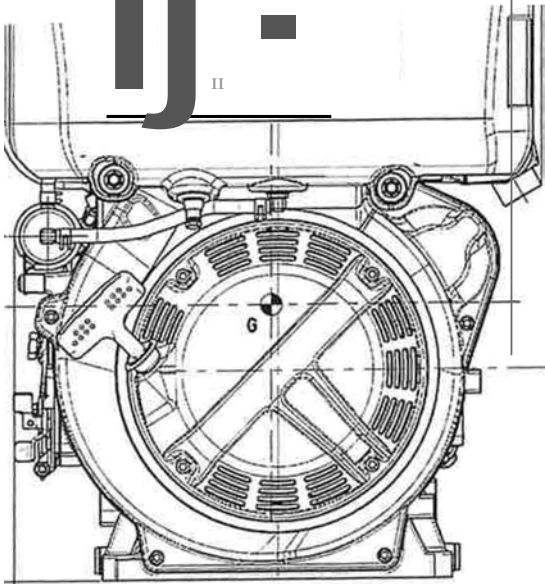
PINTLE HEIGHT

ADJUSTMENT RANGE



DETAIL A



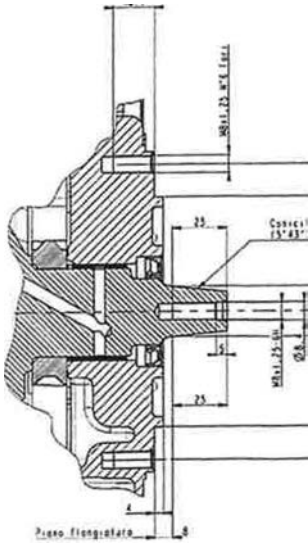
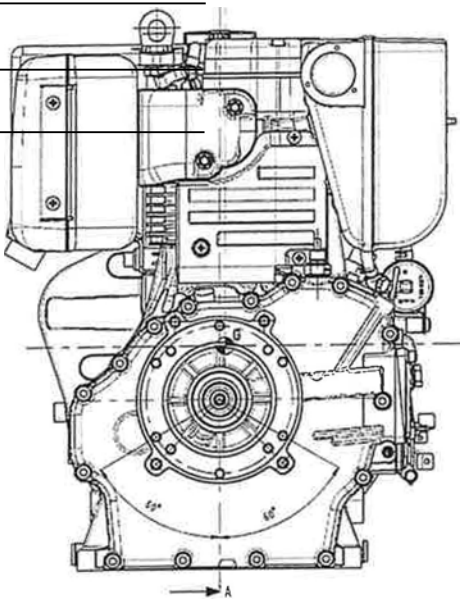


O.

-A
—1 —1

3600	6.8	1.7
3000	6.2	1.5

I 11 J 5 JI



NB Power- ISO 3046/1 -IF-N NA Power-
ISO 3046/1 -ICXN
MN Torque - (Nm)
C Specific Fuel Consumption - (kg/h)

Output Power for Fixed-Speed Application (Including Generators)

L...115111c-YJJC				
Engine Power kW aluminum crankcase, direct injection, cast-iron cylinders				
Model	KD350	KD420	KD440	KD625-2
Gross Power @ rpm	6.1 (4.6)	9.1 (6.8)	9.1 (6.8)	22.1 (16.5)
Maximum hp (kW)	@3600 rpm	@ 3600 rpm	@3600 rpm	@ 3000rpm
Displacement cu in (cc)	21.3 (349)	27 (442)	27 (442)	76.2 (1248)
Bore in (mm)	3.2 (82)	3.4 (86)	3.4 (86)	3.7 (95)
Stroke in (mm)	2.6 (66)	3 (76)	3 (76)	3.5 (88)
Cylinders	1			2
Torque @ rpm ft lb (Nm)	8.9 (12.2)	13.2 (18.0)	13.2 (18.0)	38.7 (52.5)
Compression Ratio	21.0: 1	19.8: 1	19.8: 1	19.5: 1
Dry Weight lb (kg)	72.7 (33)	99.1(45)	99.1(45)	253.8 (115)
Oil Capacity U.S. qt (L)	1.3 (1.2)	1.6 (1.5)	1.6 (LS)	2.8 (2.6)
Lubrication	Full pressure with full-flow filter			
Dimensions L x W x H in (mm)	15.7 x 18.4 (328 x 399 x 468)	20.2 x 16.2 x 20.3 {513x412x516}	20.2x16.2x 20.3	24.9 x 22 x 23.6(633 x
<div><div>Internal dynamic balancer 24 V electric start Accelerator and stop remote control Key start panel with shutdown device</div><div><h3>Popular Factory Options</h3>Fuel lift pump Oil temperature switch Glow plug on intake manifold</div><div>SAEJ609a ext 7, 9, 6, 3 and 4 intergral crankshaft options with type a & b mounting flanges Extended wiring harness</div></div>				

- 4-stroke Air-Cooled Diesel Engine
 - SAE J609a Flange B
 - Counterclockwise Rotation
 - Direct Injection
 - Full-Pressure Lubrication
 - Centrifugal Mass Governor
- Oil-Breathing Blow-By with Safety Device
 - Automatic Extra-Pue I Starting Device
 - Self-Bleeding Fuel System
 - Torque Regulator
 - Automatic Compression Release
- Aluminum Cylinder Head
 - Mounting Feet
 - Hydraulic Valve Lifters
 - EGR System

- Built-in Full-Flow Oil Filter
- 4-Stroke Air-Cooled Diesel Engine
- Direct Injection • Flywheel Fan Air Cooling • Mechanical Fuel Pump
- Full-Pressure Lubrication
- Die-Cast Aluminum Crankcase with Integral Cast-Iron Cylinder Liner

Standard Features - Multi Cylinders		
3-Year Limited Warranty	• Full-Flow Oil Filter	• Counterclockwise Rotation (From Side)
	• Automatic Extra-Fuel Starting Device	• Aluminum Alloy Independent Heads
	• Variable-Speed Governor	• Power Takeoff on Crankcase
	• Aluminum Crankcase	• Reborable Independent Cast Cylinders
Standard	• 12 V Electric Starter	
	Features - Single Cylinder	